



---

## Paper & sustainability

---



# ITALIAN PAPER INDUSTRY AT A GLANCE

119 companies, 153 paper mills

19.100 employees

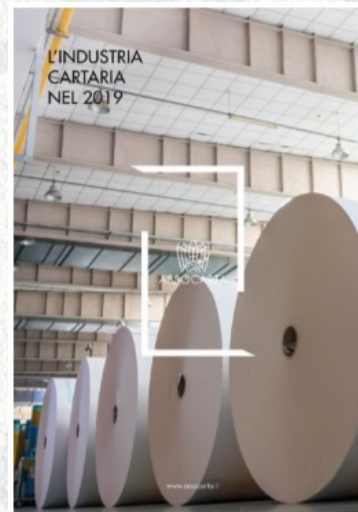
7,26 billions of € of turnover

8.901.000 t. produced

3.724.000 t. exported

5.406.000 t. imported

10.583.000 t. consumed, i.e to 175,3 kg pro capite



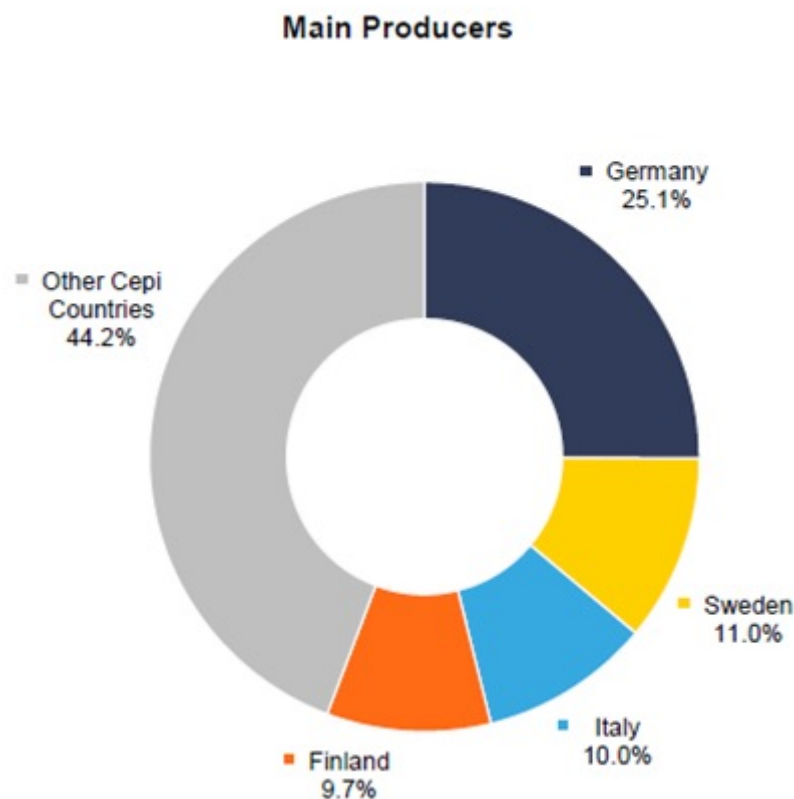
L'INDUSTRIA  
CARTARIA  
NEL 2019

(Source: Assocarta, 2020)



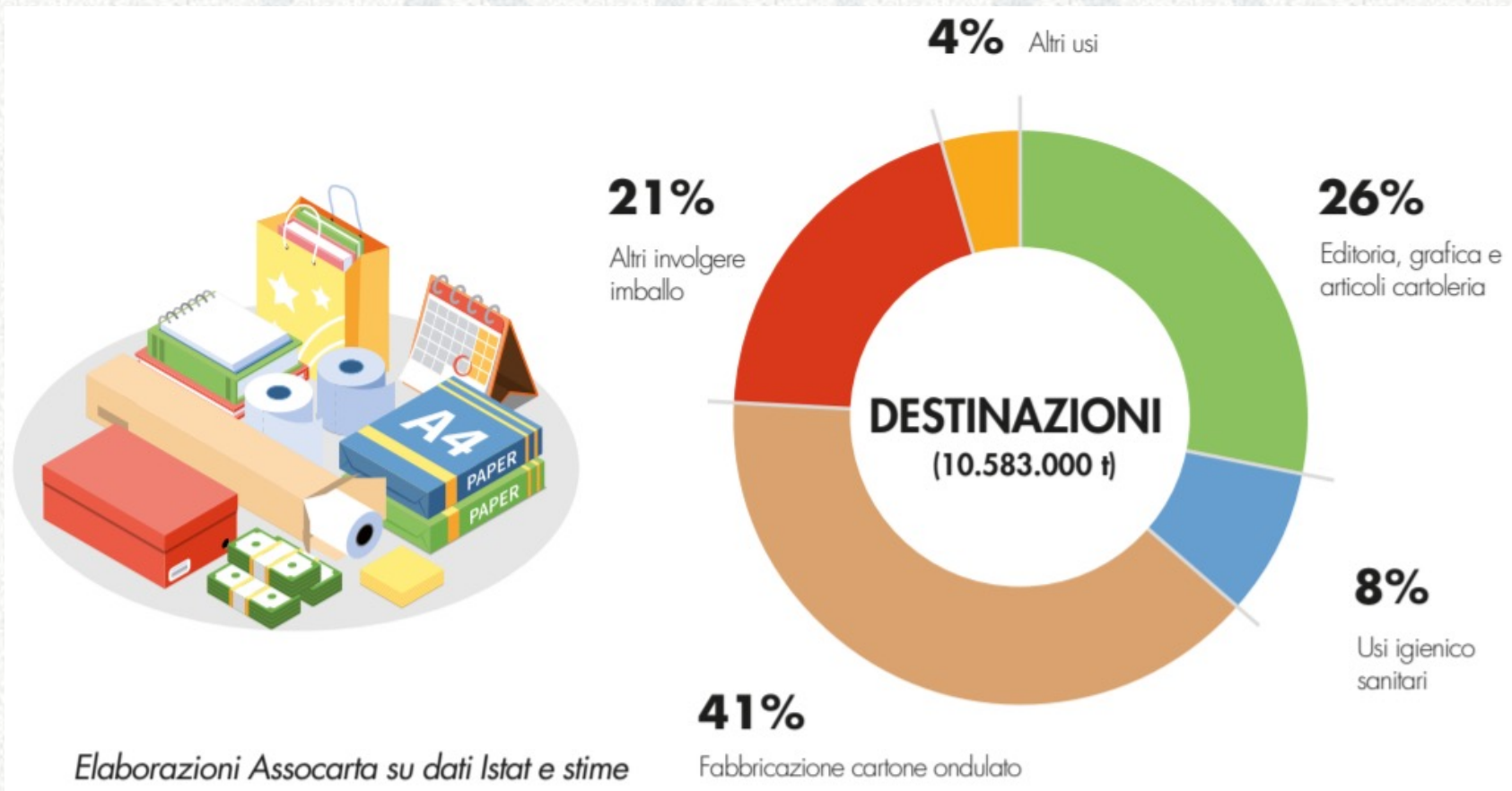
# EUROPEAN RANKING

Second Eu producer of  
wrapping paper, first  
producer of tissue,  
Third in recycling.



(Source: Assocarta, 2020)

# USES OF PAPER



**An «essential» sector for information, culture, packaging and hygiene**



# ENVIRONMENTAL PERFORMANCES

The Italian paper industry has been publishing environmental reports over the last 21 years



## RAPPORTO AMBIENTALE DELL'INDUSTRIA CARTARIA ITALIANA

DATI 2018-2019

**58,6% of fibre source is paper for recycling**

**85% of virgin fibre are FSC or PEFC certified, 100% with due diligence**

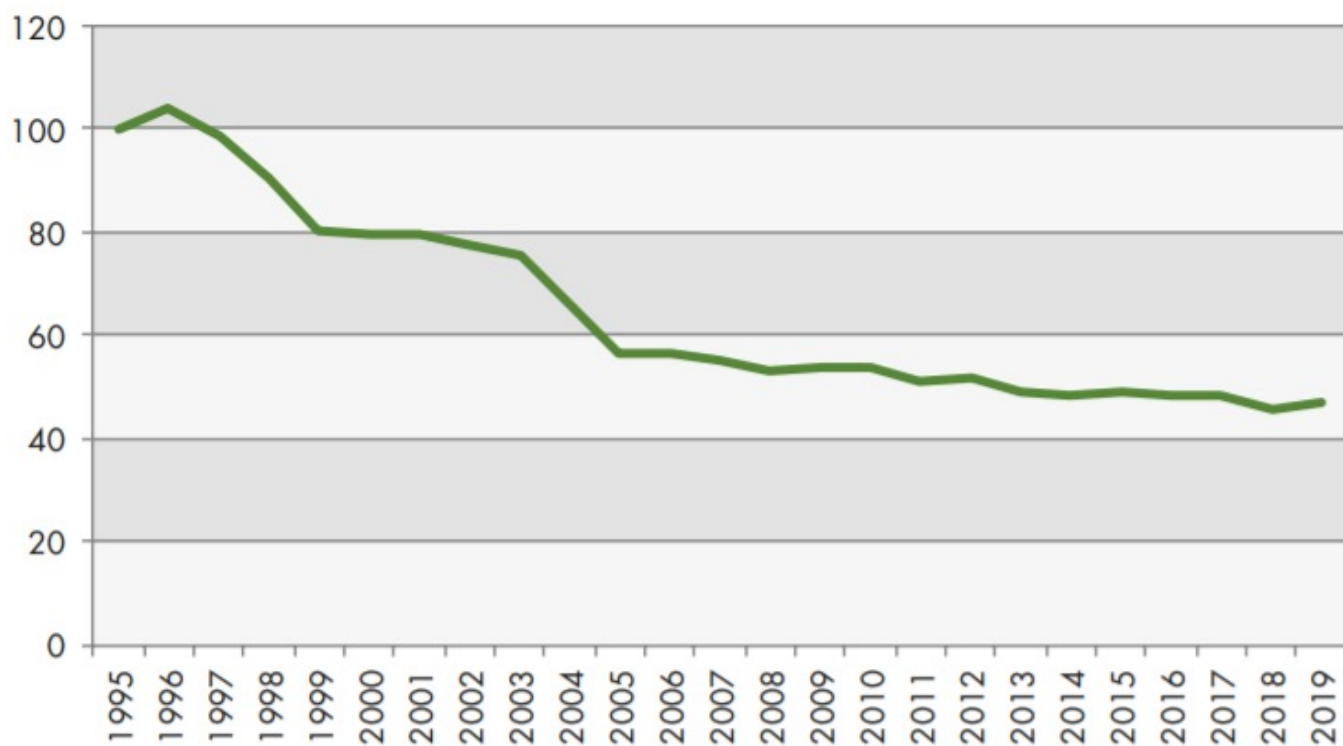
**79,6% of the paper produced come from ISO 14001 or EMAS sites**

**80% of packaging is recycled**

# WATER USE



11 - ANDAMENTO DELL'IMPIEGO SPECIFICO DI ACQUA (M<sup>3</sup>/T INDICIZZATO AL 1995 = 100)



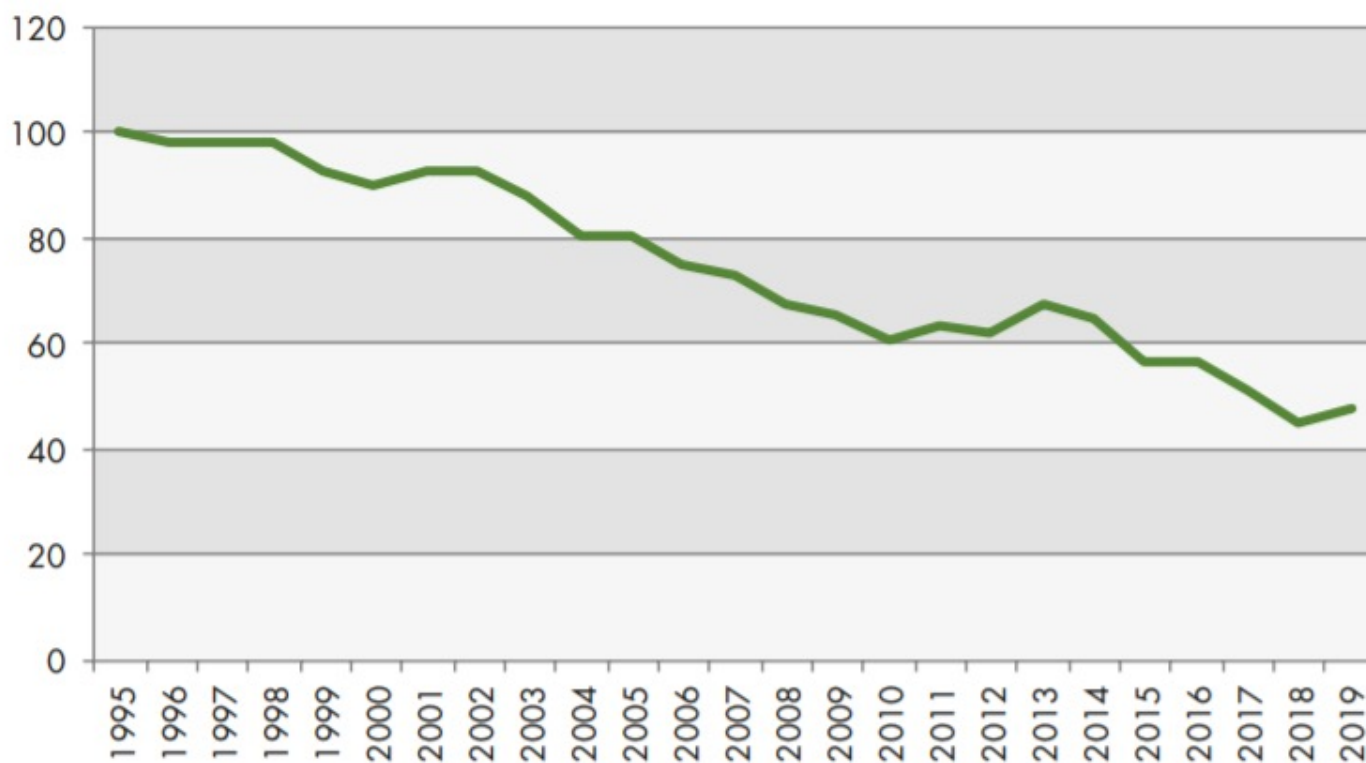
Fonte: elaborazione Assocarta



# COD EMISSIONS



12 - ANDAMENTO DELLE EMISSIONI SPECIFICHE DI COD (KG/T INDICIZZATO AL 1995 =100)

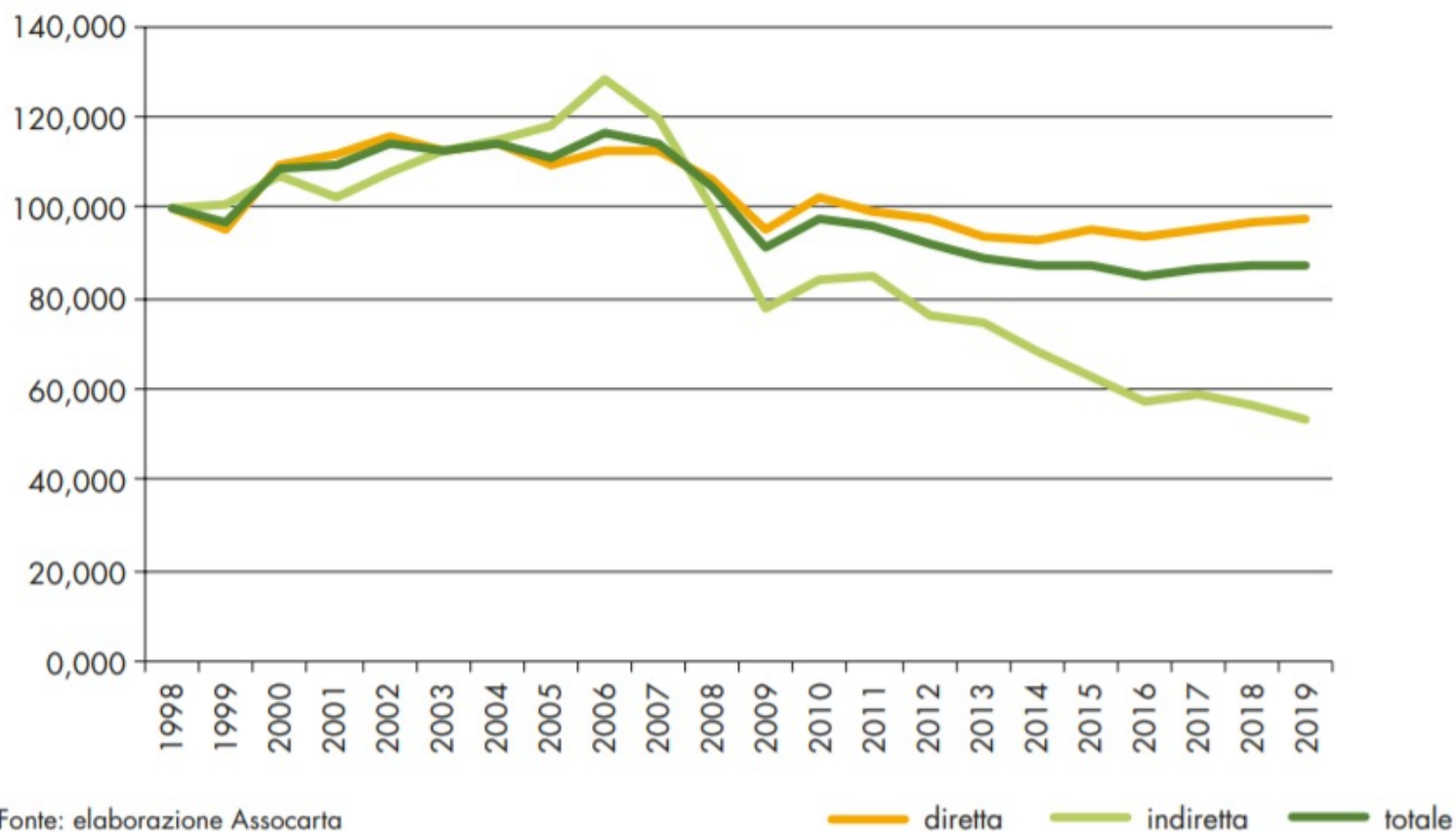


Fonte: elaborazione Assocarta

# AIR EMISSION



15 - ANDAMENTO DELLE EMISSIONI TOTALI DI CO2 DA FONTE FOSSILE (KG/T INDICIZZATO AL 1998 = 100)

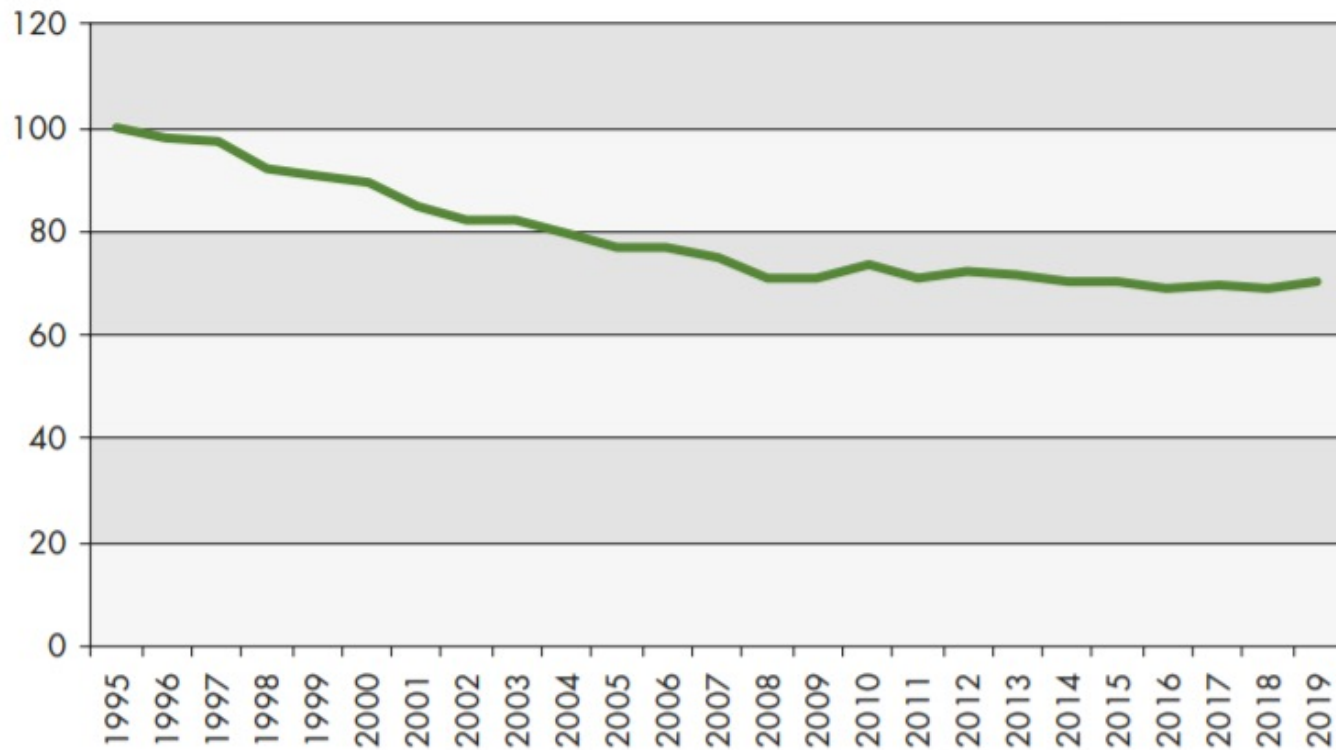




# ENERGY EFFICIENCY



**17 - ANDAMENTO DEI CONSUMI ENERGETICI SPECIFICI DEL SETTORE CARTARIO IN RELAZIONE ALLA PRODUZIONE (GJ/T INDICIZZATO AL 1995 = 100)**

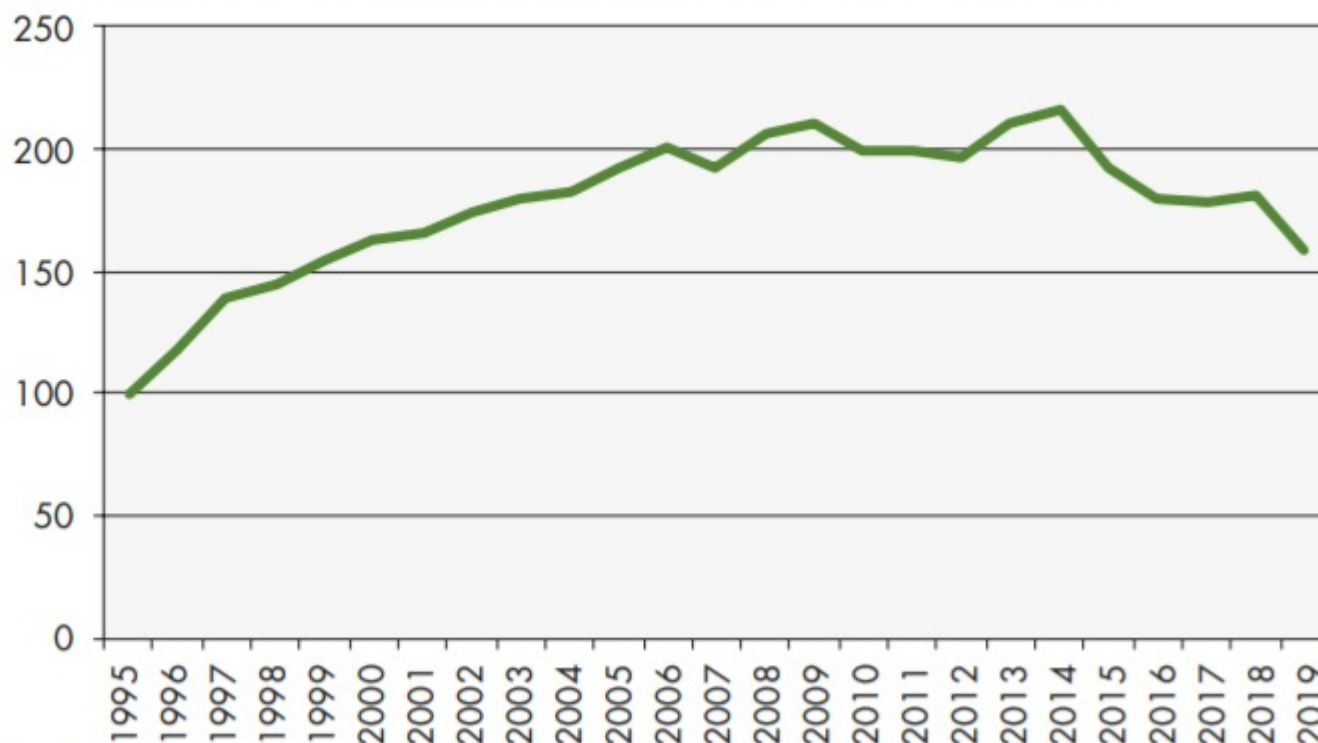


Fonte: elaborazione Assocarta

# WASTE PRODUCTION



19 - ANDAMENTO DELLA PRODUZIONE SPECIFICA DI RIFIUTI (KG/T INDICIZZATO AL 1995 =100)

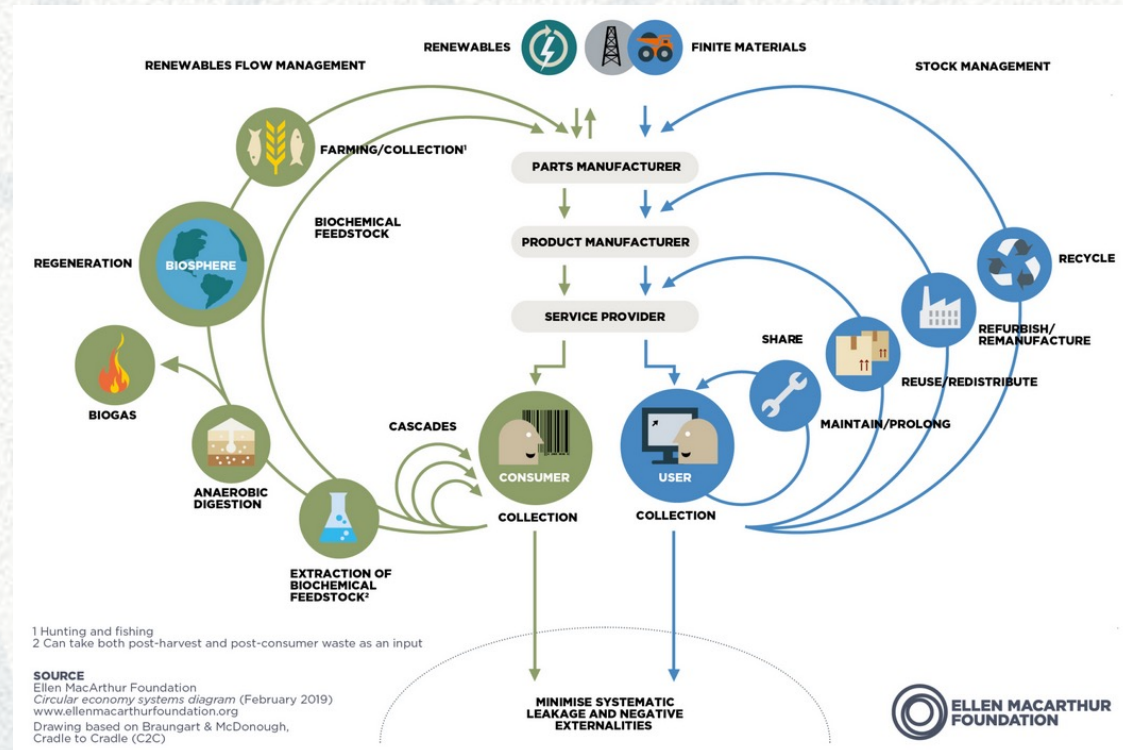


Fonte: elaborazione Assocarta



# PAPER: A CIRCULAR MATERIAL

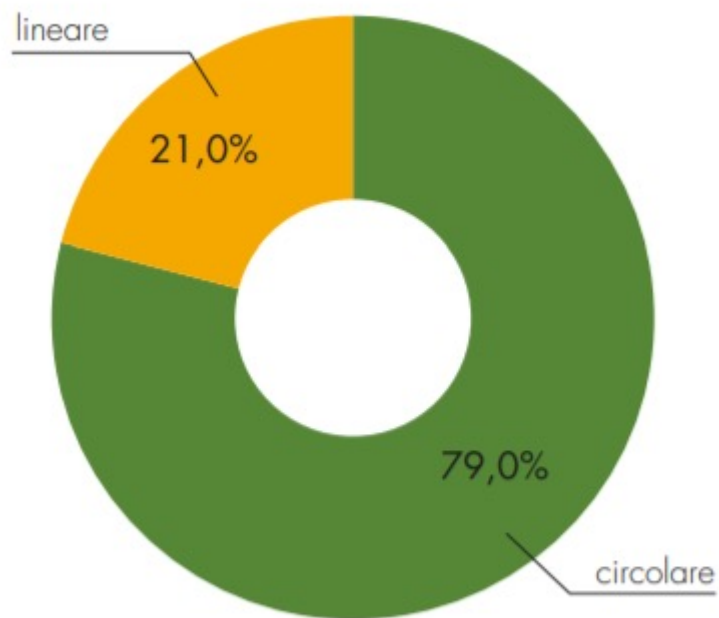
Natural origin,  
renewable,  
biodegradable  
and  
recyclable.



Paper is a material that can actively participate  
to both the technological and biological cycles.  
It is a champion of circular bio-economy

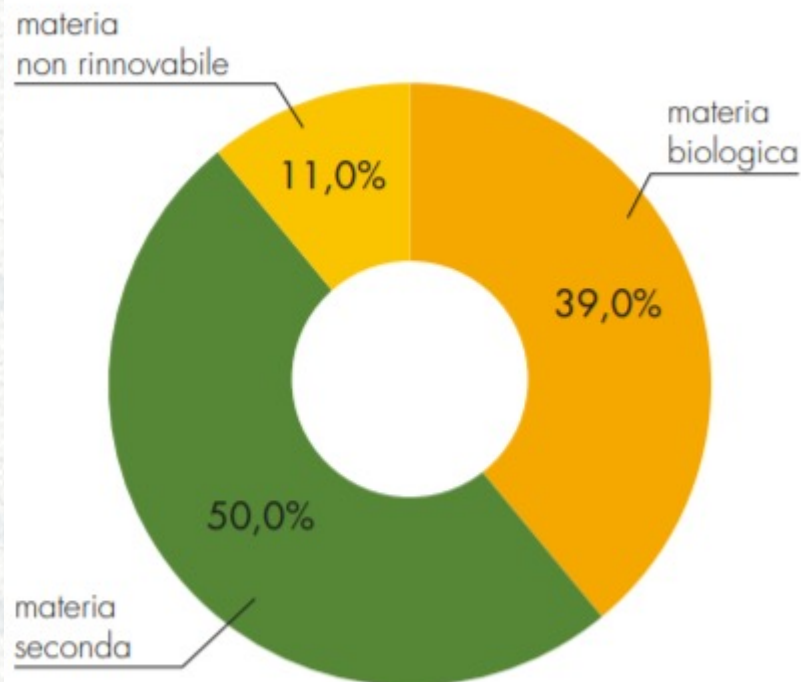
# CIRCULARITY IN NUMBERS

21 - INDICE DI CIRCOLARITÀ DI MATERIA NEL 2019 (%)



Fonte: elaborazione Legambiente

23 - MATERIE SECONDE E RINNOVABILI NEL 2019 (%)



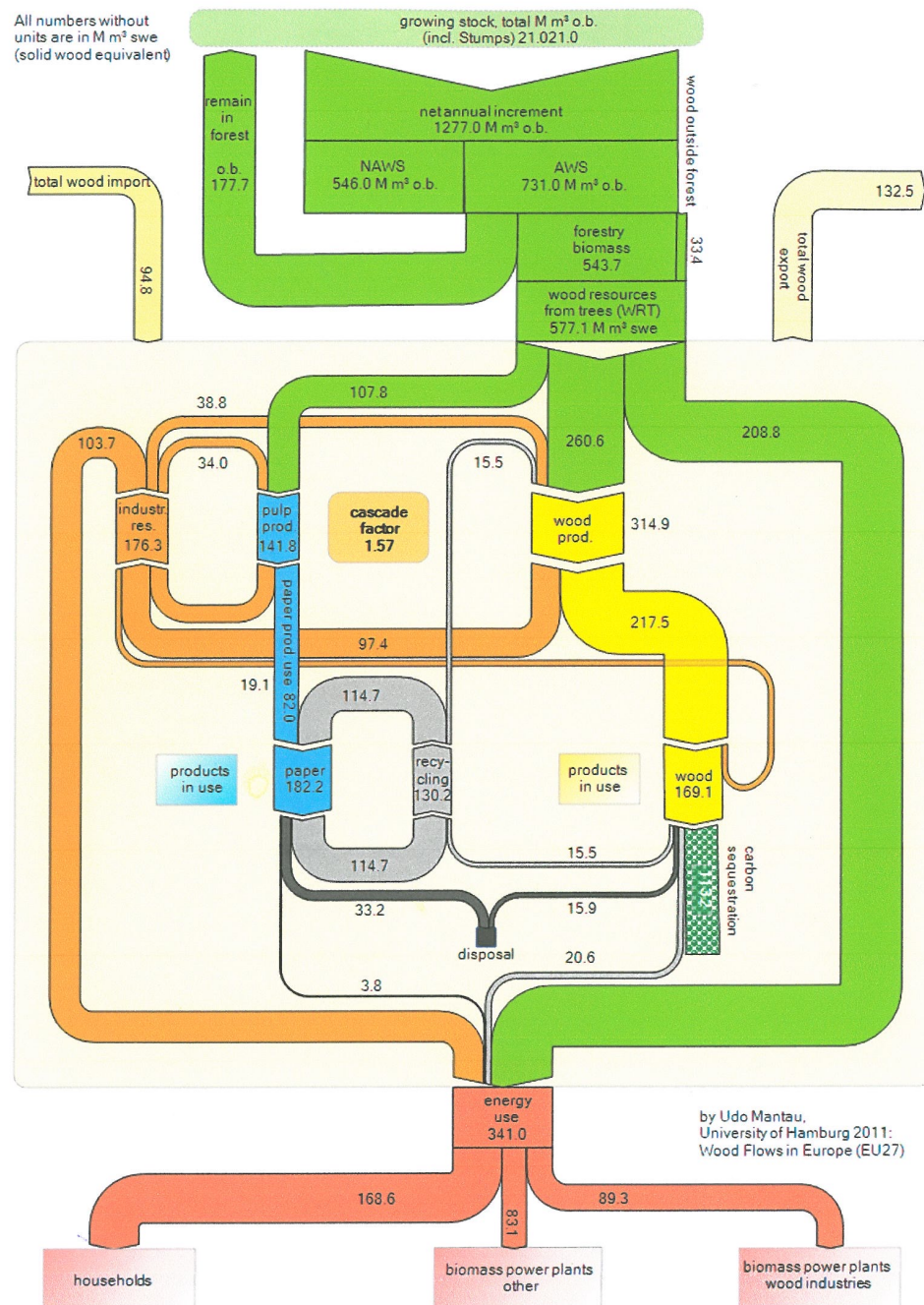
Fonte: elaborazione Legambiente



# FOREST STREAMS

Forest management and recycling allow to use forest resources in a sustainable manner.

All numbers without units are in M m<sup>3</sup> swe (solid wood equivalent)





# CONSUMER PERCEPTION

Paper and board packaging scores at the highest for compostability (72%), better for the environment (62%) easier to recycle (57%), while glass is better for reuse (55%) and better protection (51%). Paper is also considered less expensive, light, easier to open and store.

53% of citizens ready to pay more for sustainable packaging.



Fonte: [https://www.twosides.info/documents/research/2020/packaging/Il-packaging-agli-occhi-del-consumatore-europeo-2020\\_IT.pdf](https://www.twosides.info/documents/research/2020/packaging/Il-packaging-agli-occhi-del-consumatore-europeo-2020_IT.pdf)

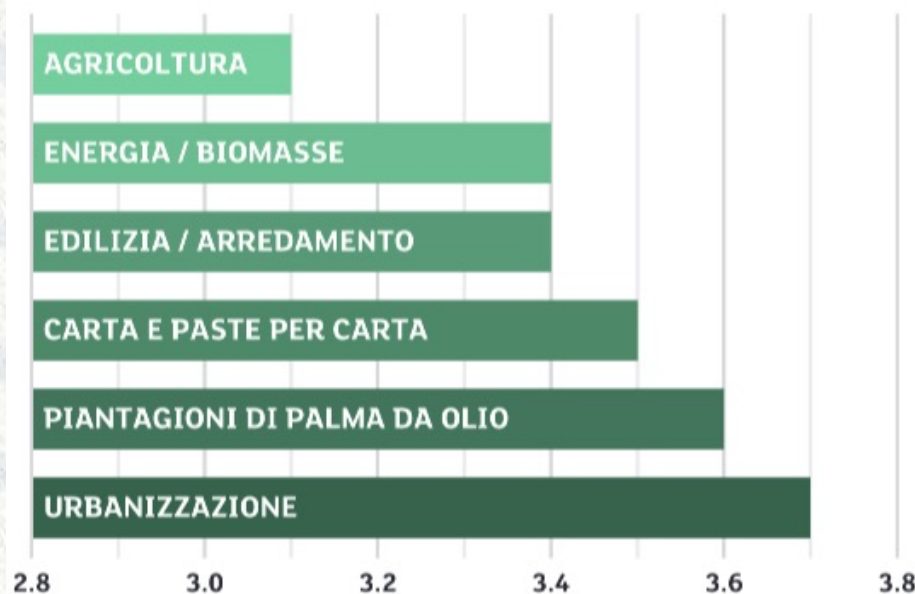


# PAPER STILL PERCEIVED AS HIGHLY RESPONSIBLE

82% of Italian citizens believe that European forest area is reducing in size (EU average is 64%)

62% pay attention to label related to forest certification when purchasing paper products.  
(Eu average is 40%)

*Quale industria/attività reputi abbia il maggiore impatto sul patrimonio forestale? 1 indica l'industria con minor impatto e 5 l'industria con l'impatto maggiore*



Source: <https://www.twosides.info/> year 2019 and 2021

# CONCLUSIONS

The consumer, who is increasingly aware of sustainability issues, is now the main driver in the choice of products and materials.

Paper fundamental characteristics (natural origin, renewability, biodegradability, recyclability) make it ready to meet current and future sustainability needs.

Perception about paper is improving but we need to work more to allow citizens to distinguish virtuous behaviour.

The paper industry renews its commitment to sustainable raw material sourcing, responsible manufacturing and circular end-of-life.





**Massimo Ramunni**  
[massimo.ramunni@assocarta.it](mailto:massimo.ramunni@assocarta.it)